



KONICA MINOLTA

**bizhub c4000i**  
Color printer

**bizhub  
i-SERIES IS  
SMARTER  
WORKING**  
RETHINK IT



Giving Shape to Ideas

## CUSTOMER BENEFITS



### Intuitive operability

Operate the bizhub like a smartphone or tablet with fully customized user interface



### Mobile connectivity

Print anytime from anywhere with Konica Minolta's innovative mobile technologies



### Services

Efficient printer fleet management, including automatic consumables delivery, pro-active maintenance and remote setup



### Sustainability

Numerous eco features reduce energy consumption and costs

## OPTIONS

### 1 CONNECTIVITY

Wireless LAN  
UK-221

USB I/F kit  
EK-P08

USB I/F kit  
EK-P09

NFC kit  
EK-P10

Biometric authentication  
AU-102

ID card reader  
AU-205H

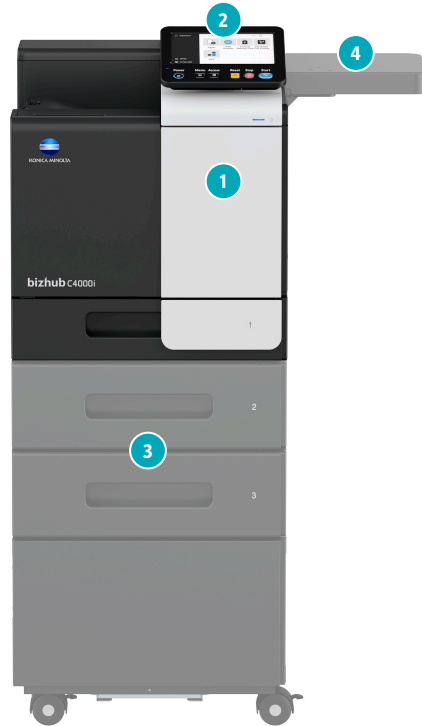
Mount kit  
MK-P08

OR

OR

### LEGEND

- Mandatory option
- Option
- This option can only be installed with the respective option above it



### 2 OTHERS

Working table  
WT-P03

10-Key pad  
KP-P03

Keyboard holder  
KH-P02

Keyboard

### 3 MEDIA INPUT

Paper tray  
PF-P21

Height adjustment unit  
PF-P25

Copy desk  
DK-P05

### 4 MEDIA OUTPUT

Off-line stapler  
FS-P04

## FINISHING FUNCTIONALITIES



Duplex



Corner  
stapling  
(offline)

## DESCRIPTIONS

### CONNECTIVITY

UK-221 Wireless LAN	Wireless LAN and wireless LAN Access Point Mode
EK-P08 USB I/F kit	USB keyboard connection
EK-P09 USB I/F kit	USB keyboard connection; Bluetooth
EK-P10 NFC interface	To connect with Android mobile devices
AU-102 Biometric authenticator	Finger vein scanner
AU-205H ID card reader	Various ID card technologies
MK-P08 Mount kit	Installation kit for ID card reader

### OTHERS

WT-P03 Working table	Authentication device placement
KP-P03 10-Key pad	For use instead of touchscreen
KH-P02 Keyboard holder	To place USB keyboard
Keyboard	Keyboard for alphanumeric data entry

### MEDIA OUTPUT

PF-P21 Paper tray	500 sheets, A4, 60-90 gsm (Max. 2)
PF-P25 Height adjustment unit	To achieve comfortable height for operation
DK-P05 Copier desk	Provides storage space for print media and other materials

### MEDIA OUTPUT

FS-P04 Off-line stapler	20-sheet off-line stapling
-------------------------	----------------------------

## TECHNICAL SPECIFICATIONS

### SYSTEM SPECIFICATIONS

Panel size/resolution	7" / 800 x 480
System memory (standard/max)	4 GB
Interface	10/100/1,000-Base-T Ethernet; USB 2.0; Wi-Fi 802.11 b/g/n (optional)
Paper input capacity (standard/max)	600 sheets/1,600 sheets
Paper tray input (standard)	1x 500 sheets; 3.9" x 5.8" to 8.5" x 11"; 60-210 gsm
Paper tray input (optional)	2x 500 sheets; letter/legal; 60-90 gsm
Manual bypass	100 sheets; 3.5" x 8.8" to 8.5" x 14"; Custom sizes; 60-210 gsm
Automatic duplexing	4.7" x 8.8" to 8.5" x 14"; 60-210 gsm
Finishing modes (optional)	Group; Sort; Staple (offline)
Output capacity (standard)	Max. 250 sheets
Print volume (monthly)	Rec. 6,500 pages; Max. <sup>1</sup> 96,000 pages
Toner lifetime	Black up to 13,000 pages CMY up to 9,000 pages
Imaging unit lifetime	Black up to 200,000 pages CMY up to 100,000 pages
Power consumption	110-120 V / 50/60 Hz; Less than 1.45 kW
System dimension (W x D x H)	16.5" x 20.8" x 18.6" (without options)
System weight	Approx. 73lb (without options)

### PRINTER SPECIFICATIONS

Imaging technology	Laser
Toner technology	Simitri® HD polymerized toner
Print resolution	1,800 (equivalent) x 600 dpi; 1200 x 1200 dpi
Print Speed letter (mono/color)	Up to 42/42 ppm
1 <sup>st</sup> print out time letter (mono/color)	8.0/8.7 sec. Warm-up time Approx. 13 sec. in mono; 15 sec. in color <sup>2</sup>
Page description language	PCL 6 (XL3.0); PCL 5c; PostScript 3 (CPSI 3016); XPS
Operating System	Windows 7 (32/64); Windows 8/8.1 (32/64); Windows 10 (32/64); Windows Server 2008 (32/64); Windows Server 2008 R2; Windows Server 2012; Windows Server 2012 R2; Windows Server 2016; Windows Server 2019; Macintosh OS X 10.10 or later; Unix; Linux; Citrix
Printer fonts	80 PCL Latin; 137 PostScript 3 Emulation Latin
Mobile printing	AirPrint (iOS); Mopria (Android); Konica Minolta Mobile Print (iOS/Android/Windows 10 Mobile); Mobile Authentication and Pairing (iOS/Android) Optional: WiFi Direct

**SYSTEM FEATURES**

<b>Security Functions (standard)</b>	ISO 15408 HCD-PP Common Criteria (in evaluation); IP filtering and port blocking; SSL2; SSL3 and TLS1.0/1.1/1.2 network communication; IPsec support; IEEE 802.1x support; User authentication; Authentication log; Secure print; Kerberos; Print user data encryption
<b>Accounting (standard)</b>	Up to 100 user accounts; Active Directory support (user name + password)
<b>Accounting Functions (optional)</b>	Biometric authentication (finger vein scanner); ID card authentication (ID card reader); Authentication by mobile device (Android/iOS)
<b>Software</b>	Net Care Device Manager; Data Administrator; Web Connection; Print Status Notifier; Driver Packaging Utility; Log Management Utility

<sup>1</sup> Maximum monthly copy/print volume supported under standard vendor supplied service. Defines the upper end of the expected customer volume for the device. Customers should consider multiple machines if average monthly volume approaches duty cycle on a continual basis.

<sup>2</sup> Warm-up time may vary depending on the operating environment and usage

- All specifications refer to letter-size paper of 80 gsm.
- The support and availability of the listed specifications and functionalities varies depending on operating systems, applications and network protocols as well as network and system configurations.
- The stated life expectancy of each consumable is based on specific operating conditions such as page coverage for a particular page size (5% coverage of letter). The actual life of each consumable will vary depending on use and other printing variables including page coverage, page size, media type, continuous or intermittent printing, ambient temperature and humidity.
- Some of the product illustrations contain optional accessories.
- Specifications and accessories are based on the information available at the time of printing and are subject to change without notice.
- Konica Minolta does not warrant that any specifications mentioned will be error-free.
- All brand and product names may be registered trademarks or trademarks of their respective holders and are hereby acknowledged.

**PARTNERSHIP.**

Konica Minolta can help give shape to your ideas and partner with you to achieve your corporate objectives. Contact us to realize opportunities in:

**INFORMATION MANAGEMENT**

- Enterprise Content Management (ECM)
- Document Management
- Automated Workflow Solutions
- Business Process Automation
- Security and Compliance
- Mobility
- eDiscovery Services

**IT SERVICES**

- Application Services
- Cloud Services
- IT Security
- Managed IT Services
- IT Consulting & Projects
- Apple Managed Services
- Managed Voice Services
- Technology Implementation and Deployment

**TECHNOLOGY**

- Office Multifunction Business Solutions
- Commercial and Production Printers
- Industrial Printers
- Wide Format Printers
- 3D Printers
- Scanners
- Security Surveillance Systems
- Laptops, Desktops and Computer Hardware
- Servers and Networking Equipment
- Managed Print Services (MPS)
- Managed Enterprise Services



For complete information on Konica Minolta products and solutions, please visit: [CountOnKonicaMinolta.com](http://CountOnKonicaMinolta.com)



**KONICA MINOLTA**  
**KONICA MINOLTA BUSINESS SOLUTIONS U.S.A., INC.**  
 100 Williams Drive, Ramsey, New Jersey 07446  
[CountOnKonicaMinolta.com](http://CountOnKonicaMinolta.com)